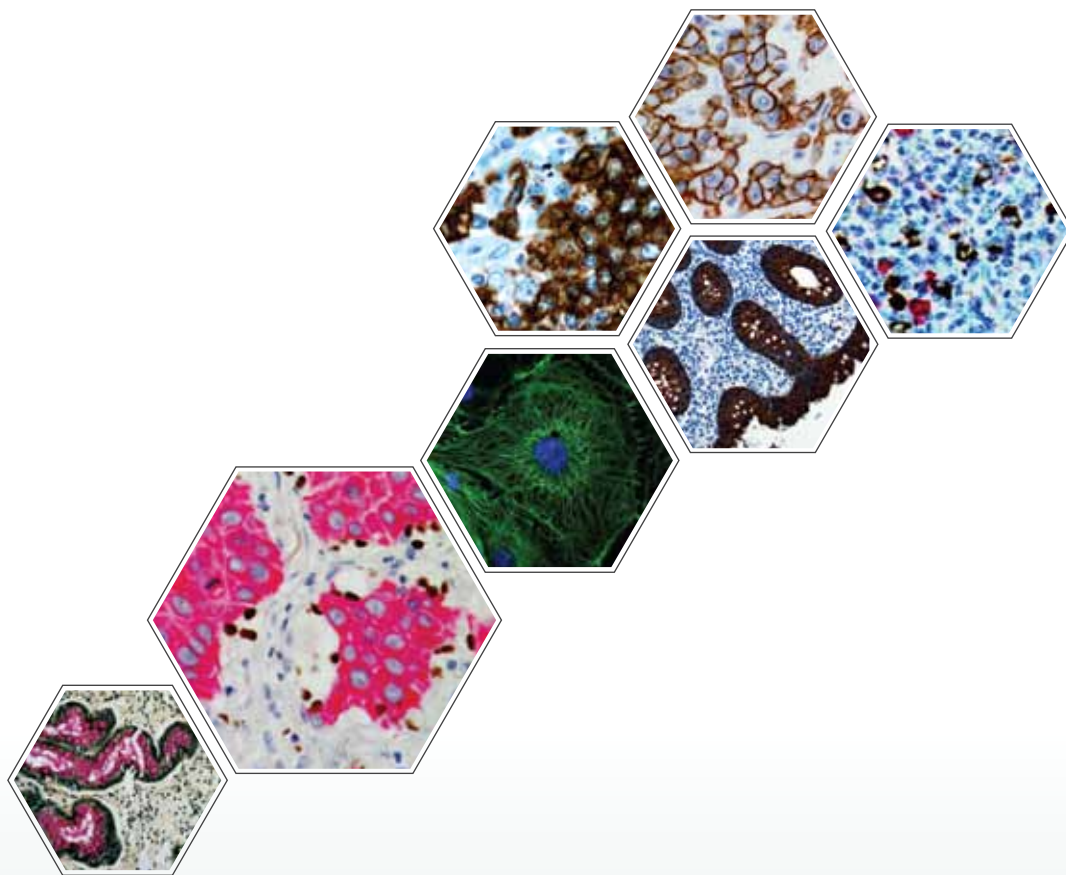


*i6000*TM *Infinity*

Multifunctional Staining System for Research



Accelerate your research
All-in-One
IHC, IF, ISH, CISH...

Key Features & Benefits



Accelerate the Pace of Discovery

- Fully open system to customize any manual protocol
- Multi-functional system performs multiplex IHC, ISH, IF and Special Stains
- Multi-format specimen analysis - Frozen, FFPE, Cell Preparations, Smears, and FNAs
- Simultaneous optimization of up to 60 assay parameters
- Unattended overnight run option and High Throughput

Flexible, Safe and Easy to Use

- Pre-optimized ready to use or user defined reagents
- Multiple slide processing options – Random, Continuous and STAT
- Disposable pipette tips – eliminates cross contamination
- Store customized protocols – For future use

Open Intuitive Software

- Customize protocols by editing individual slide processing parameters
- Edit and fine-tune pre-defined/stored protocols
- Audio and Visual alerts at every step for manual intervention
- Real-time slide map including time to completion
- Pause the run at any step for manual intervention

Customized Reporting System

- Crystal reports
- Regulatory compliance and submission
- Run Parameters, reagent expiration dates and specimen used
- Reagent inventory management

The System



Liquid Level Sensor

- Ensures adequate reagent in the vials to perform staining



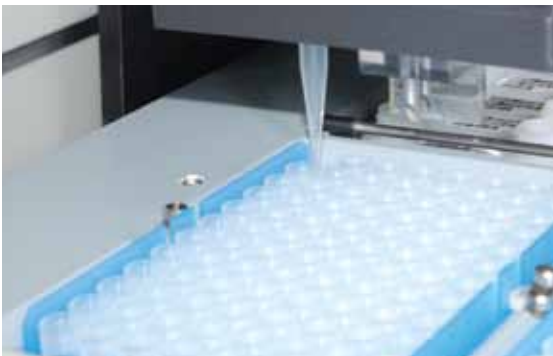
Removable Reagent Racks (2x30 vials)

- Offers quick and convenient storage of reagent vials
- Enables multiple staining protocols to be carried out in a single run



Disposable Pipette Tips

- Eliminates cross-contamination of reagents



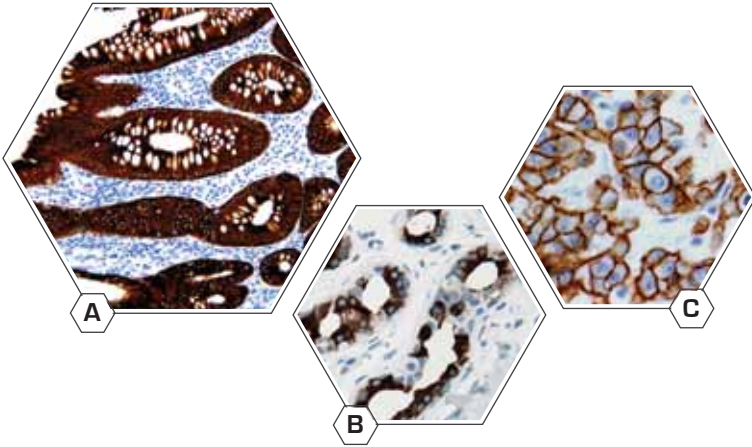
Removable Slide Racks with Splash Guard (5x12 Slides)

- Provides contamination free staining



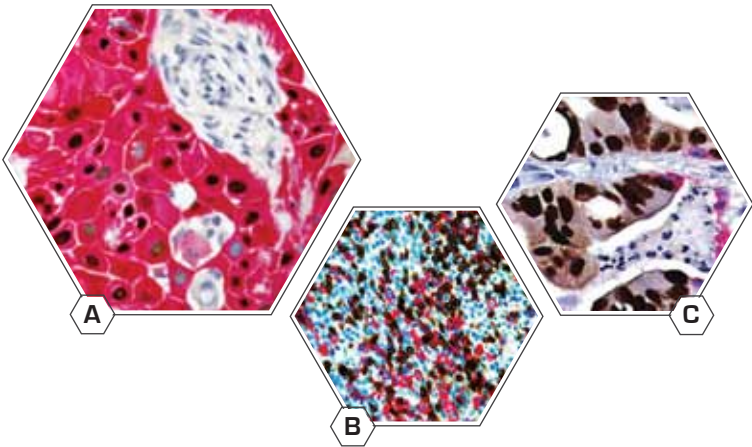
Accelerate your Research with Multifunctional Staining System

IHC

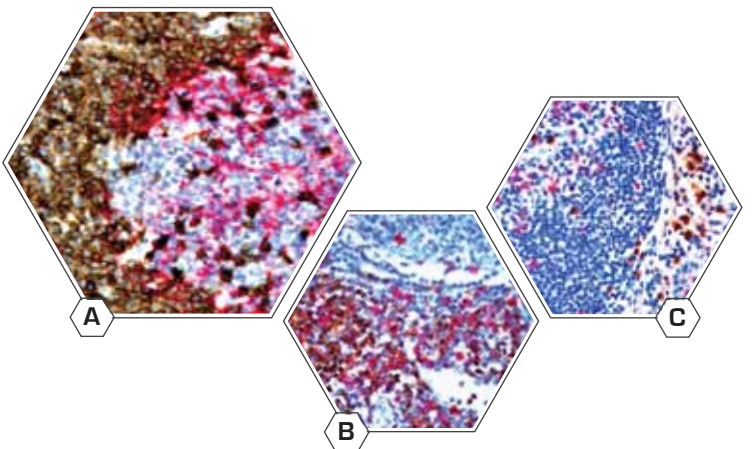


- A. Anti-CK18
- B. Anti-GCDFP-15
- C. Anti-ErbB-2/Her2

Multiplex Stains



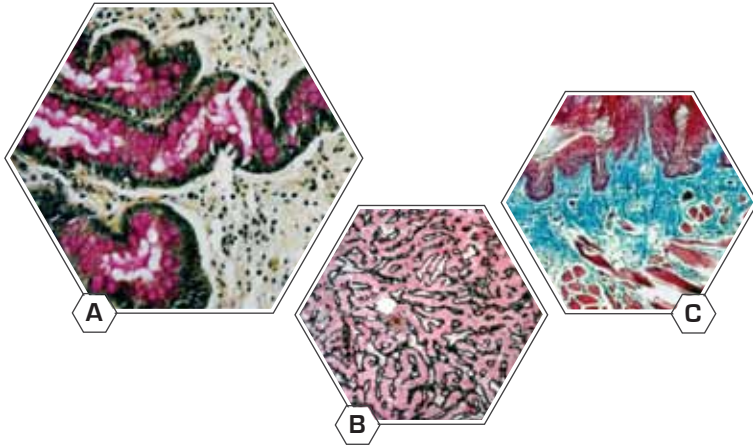
- A. SCC - Anti-p63 + Anti-CK5
- B. Tonsil - Anti-CD3 + Anti-CD20
- C. Metastatic Carcinoma in Lung
Anti-CDX2 + Anti-CK7



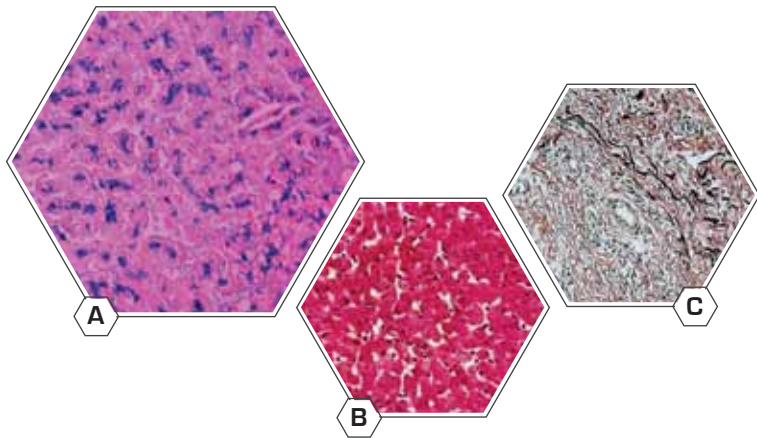
- A. anti-CD5 + anti-CD23
- B. anti-CD4 + anti-CD8
- C. anti-Ki67 + anti-Lambda

Accelerate your Research with Multifunctional Staining System

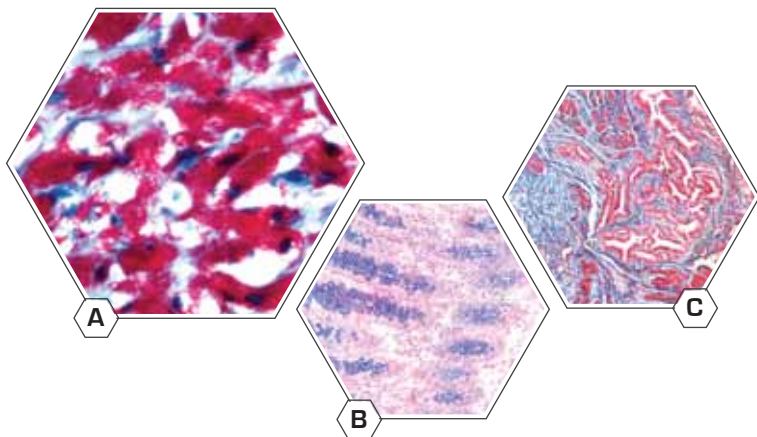
Special Stains



- A. Mucicarmin in Intestine
- B. Reticulin-Nuclear Fast Red in liver
- C. Masson's Trichrome in Skin



- A. Iron Stain
- B. PAS in Liver
- C. Elastic in Skin



- A. Acid-Fast Bacteria (AFB) Blue Stain
- B. Alcian Blue / PAS Stain
- C. Gomori's Trichrome Blue Stain

Integrated Workflow Solution

*i6000*TM *Infinity* Multifunctional Staining System for Research



EZ-Retriever[®] **System**

Pre-treatment and Antigen Retrieval System

- The i6000TM is designed to work seamlessly with EZ-Retriever[®] providing Eco-friendly De-waxing, Rehydration and Antigen Retrieval
- Broad range of optimized ready-to-use reagents

Contact Information:

USA: 49026 Milmont Drive, Fremont
CA 94538, USA

India: 225 Cherlapally, Industrial Development Area, Phase II
Hyderabad, Andhra Pradesh, India 500051

China: 1419 - 14F, Jingjiang Xiangyang Tower
993 Nanjing Xi Road (W), Shanghai, 200041, China

T: +1-800-421-4149

F: +1-510-824-1490

T: +91-40-27185500

F: +91-40-27185511/21

T: +86-21-22111550

F: +86-21-22111520



www.biogenex.com

e-mail: support@biogenex.com